

TOTALLY BOOST LITHIUM: DENSIFIER

TOTALLY BOOST LITHIUM is a lithium based concrete floor surface hardener.



FEATURES AND BENEFITS:

- Fast reaction time.
- Deep penetration into concrete substrate.
- Retains existing colour of concrete.
- Excellent for Lick Coating after 200 grit resin.
- User friendly
- Fast drying
- Low odour
- Water based

SPECIFICATIONS:

Unique WORX+ formulation • Lithium silicate solution • Available in 20 or 1000L

APPLICATION POSSIBILITIES:

Concrete floors in:

RESIDENTIAL | RETAIL | COMMERCIAL | INDUSTRIAL

PRODUCT	COVERAGE PER LITRE	WALK DRY Mins	IDEAL STORAGE TEMP Degrees
BOOST LITHIUM	8-13m2	10	
BOOST	8-13m2	30	
RESTORE (TRR) & (TRC)	10m2	30	Under 35
DEFEND	<ul style="list-style-type: none"> • 10m2 porous surfaces • 30-50m polished surfaces 	30 Burnished after 2 hrs.	Above 10



5/176 Canterbury Road, Bayswater Nth, 3153, Victoria.

Tel: 1300 897 873, www.totallyworks.com

sales@totallyworks.com, www.facebook.com/totallyworks



FORMULA WORX FLOOR TREATMENT PRODUCTS

TOTAL CONFIDENCE

Tried, tested & proven performance on the job for the job.

TOTAL RESULTS

We sell what you need for real results.

TOTAL SUPPORT

Mechanical service and repairs, training, resources, accessible advice.

TOTAL MONEY BACK GUARANTEE

Risk free purchasing. Total satisfaction or your money back.

FORMULA WORX Floor Treatment Products

Maximise your efforts and your polishing outcomes. FORMULA WORX is a range of floor treatment products specifically developed to offer end users highly effective and flexible solutions for floor preparation and polishing applications. Tried and tested; FORMULA WORX delivers outstanding and leading edge performance in all application areas, offering you and your clients confidence in the end result.



TOTALLY RESTORE - GROUT

Totally Restore Regular (TRR) is a power grouting formula, specifically designed to restore floors through filling concrete pores and pinholes. The power grouting process, fills and patches small air pockets in concrete, creating a closed and tighter slab.

USE: For filling of concrete pores and pinholes as well as small patching areas.

FEATURES & BENEFITS

- Easy application with broom or industrial sprayer
- High coverage rates
- Available in Concentrate or Regular
- User Friendly
- Increases longevity of floors
- Low cost per square meter
- VOC Free
- Environmentally responsible
- Low odour
- Water Based



SPECIFICATIONS:

Unique WORX+ formulation • Available in 20 or 1000L

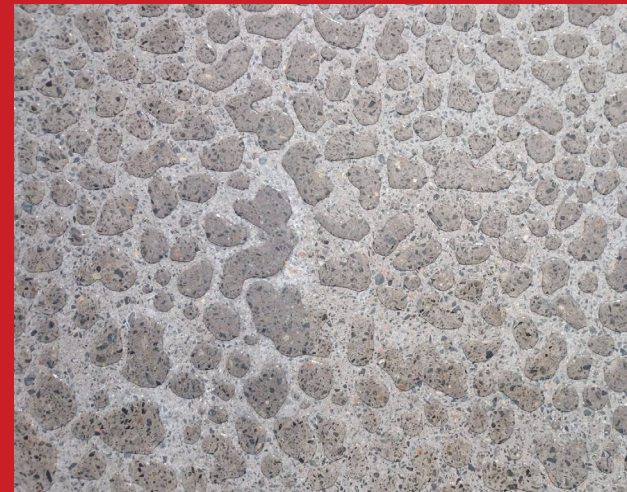
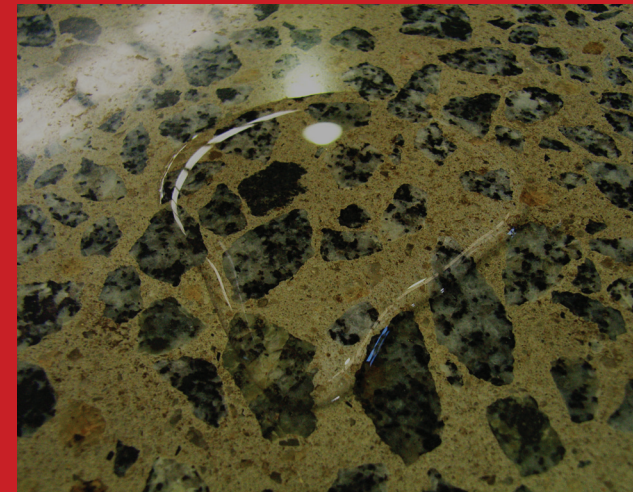
TOTALLY DEFEND (TDISE) – IMPREGNATOR

Totally Defend is a proprietary blend impregnating solvent sealer that defends indoor concrete surfaces from stains, acids, water, fats and oils, whilst enhancing their natural colour and beauty.

USE: To defend polished concrete surfaces from stains, acids, water, fats and oils and enhance the natural colour and beauty of polished concrete. For use on interior and exterior natural stone, terrazzo, masonry and concrete surfaces.

FEATURES & BENEFITS:

- Enhances the natural properties of natural stone, terrazzo, masonry and concrete surfaces.
- Improves stain, acid, oils, fat and water resistance
- Increases the longevity of concrete and stone floors
- Fast drying time, no need to leave overnight before burnishing
- Maintenance free.
- Non-topical.
- Non-yellowing.
- User friendly
- Low odour



SPECIFICATIONS:

Unique WORX+ formulation • Available in 5L

TOTALLY BOOST - DENSIFIER

TOTALLY BOOST is a uniquely formulated concrete hardening & densifying agent. Surface hardness can be improved dramatically within 24 hours, providing long term increases in strength, abrasion and stain resistance of concrete floors. Essential for enhancing the appearance of mechanically polished concrete floors.



FEATURES & BENEFITS:

- Significantly increases surface hardness within 24 hours
- Improves abrasion and stain resistance
- Enhances the appearance of finished floor
- Increases longevity of floor
- User friendly.
- VOC free.
- Low cost per square metre
- Low odour
- Water based



USE:

- Hardening and densification of concrete floors.
- Hardening and densification of concrete floors in conjunction with mechanical concrete polishing.
- Micro-grouting of mechanically polished concrete floors.

SPECIFICATIONS:

- Unique WORX+ formulation.
- Potassium based.
- Available in 20 or 1000L